

ONCE YOU HAVE IT, OUTFIT IT ACCORDINGLY.

One of the most enjoyable aspects of buying a new MAZDA5 is being able to enhance its appearance and performance with Genuine Mazda Accessories. What's more, all Genuine Mazda Accessories installed by your Mazda Dealer, prior to or at initial vehicle retail delivery, carry the same new-vehicle limited warranty as your new MAZDA5. Ask your dealer for details.



All-weather floor mats



Rear bumper guard



Roof rack ski/
snowboard carrier



iPod adapter



Cargo box - Small



Moonroof wind deflector

ALSO AVAILABLE:

Fog lights

Front grille garnish

Door visors

Remote engine start

Mud guards

Roof rack canoe/kayak carrier

Wheel locks - Chrome (set of four)



For further information, please refer to the MAZDA5 Accessories Brochure. Mazda notes that all Genuine Mazda Accessories, if installed by your Mazda Dealer prior to or at initial vehicle retail delivery, carry the same new-vehicle basic warranty as the MAZDA5.



mazda

zoom-zoom

MAZDA WARRANTY The basic warranty on the MAZDA5 covers all parts found to be factory defective for 3 years or 80,000 km, whichever comes first. Additional warranties cover powertrain components for a period of 5 years or 100,000 km, whichever comes first, body sheet metal perforation for 5 years and unlimited mileage and specific emission control components for up to 8 years or 128,000 km. Exclusions from coverage are limited to maintenance items or adjustments (repairs not requiring parts replacement) on vehicles over 12 months old and repairs due to normal wear and tear. Ask your Mazda Dealer for additional information.

ROADSIDE ASSISTANCE PROGRAM As part of our commitment to your total satisfaction, 2012 MAZDA5 owners are automatically enrolled in our Roadside Assistance Program. Roadside Assistance protects your MAZDA5 for the duration of the 3-year basic limited warranty. Should you require assistance during this period, our service will help to get your vehicle back on the road and minimize any inconvenience. For complete details on this program, see your Mazda Dealer.

MAZDA MOBILITY ASSISTANCE PROGRAM Mazda Canada believes that vehicle access is vital for everyone. Under this program, physically challenged customers who purchase or lease a new, unused Mazda vehicle may be eligible to receive assistance from Mazda Canada Inc. to aid with the cost of acquiring and installing adaptive driving aids on their vehicle. For complete details on this program, see your Mazda Dealer.

MAZDA TEST-DRIVE EXPERIENCE Exhilaration begins with the Mazda Test-Drive Experience - a uniquely designed road trip engineered to take you miles beyond the ordinary test-drive. Down local streets, on-ramps, highways and off-ramps. Through straightaways, S-curves and corners. It's all about putting a Mazda to the test under real-world conditions. It's about discovering the superb acceleration, braking, steering, handling and ride quality that every Mazda offers. And rediscovering that fun, connected-to-the-road feeling we call Zoom-Zoom.

READY TO ROLL Our pre-delivery commitment means every new Mazda is checked out, gassed up and fitted with floor mats.



For peace-of-mind motoring, we've created the Mazda Added Protection Plan (M.A.P.). M.A.P. complements your Mazda Limited Warranty for up to 7 years or 160,000 km, and protects you from unexpected repair expenses and the rising cost of repairs. All M.A.P. plans include Personal Budget and Repair Inflation Protection. In addition, all M.A.P. plans include Premium Roadside Assistance, which extends the roadside assistance coverage offered during the new-vehicle limited-warranty period throughout the M.A.P. term. The Premium Roadside Assistance offers Towing, Winching, Battery Boost, Out-of-Fuel Coverage, Tire Service, Lockout Service, Emergency Travel Expense Reimbursement and Travel Planning and Dealer Locator. Should you ever decide to sell your Mazda vehicle, M.A.P. is transferable to future owners and will enhance the resale value of your vehicle. The Mazda Added Protection Plan is fully backed and administered by Mazda Canada Inc. For more information, please contact your Mazda Dealer.



Ask your dealer about Mazda's competitive program for recent university and college graduates.

Product changes and options availability: Following publication of this brochure, certain changes in standard equipment, options, prices and the like, or product delays may have occurred which would not be included in these pages. Your Mazda Dealer is your best source for up-to-date information. Mazda reserves the right to change product specifications at any time without incurring obligations. Options and accessories shown or described in this brochure are available at extra cost and may be offered only in combination with other options or subject to additional ordering requirements or limitations. E. & O. E.

Check us out on Facebook: or Twitter:



Get more detailed information on your MAZDA5. Check out our website at www.mazda.ca for specifications and features, option packages, pricing, financing, to get a quote and find a dealer near you.
© 2011 Mazda Canada Inc., 55 Vogell Road, Richmond Hill, Ontario L4B 3K5 Printed in Canada Part No. 9999-92-M512-EN



MIX
Paper from
responsible sources
FSC® C101537



mazda

2012 Mazda5





THE ALL-NEW MAZDA5.
FOR LIFE
UNEXPECTED.

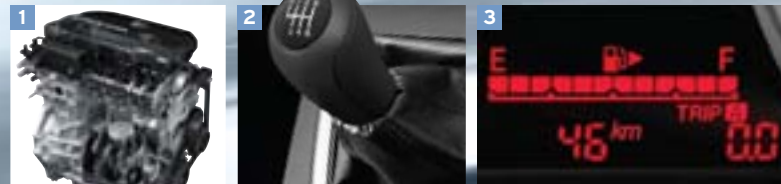
If there is one thing you can count on in life, it's to expect the unexpected. Being ready, willing and able for each day's twists and turns means the difference between enjoying the ride, and just getting by. And what's the point of just getting by? Especially when you can ride the limelight while taking it all on.

With its in-motion styling and dynamic design, the all-new, redesigned 2012 MAZDA5 builds on a solid reputation and popularity, bringing a whole new meaning to form and function. MAZDA5, like you, refuses to be categorized because it refuses to limit itself to being just one thing. Remarkably nimble and roomy. With exceptional versatility and safety. MAZDA5 offers a refreshing look at transportation and a revolutionary new way for weekday warriors, maverick multi-taskers and parental pioneers to move their lives - without ever having to give up exceptional quality and style. You all know who you are, and your chariot awaits.

MAZDA5. Choreographing life's unexpected twists and turns.

PREPARED FOR *ALMOST ANYTHING.*

Mazda is about preparing for the unexpected by building the unexpected. That's why the all-new MAZDA5 is about as far from a conventional six-passenger vehicle as you can get. Sleek, sporty and ingenious, its attention to craftsmanship is an attention-getter. Starting with MAZDA5's advanced 2.5 L, DOHC engine, delivering a pump-friendly 6.8 L/100 km highway (6-speed manual transmission)*. Plus the Electro-Hydraulic Power-Assist Steering, tight 11.2 m turning circle and agile, MAZDA3-based platform make it one of the most outstanding six-passenger vehicles to maneuver down the highway. Or whatever road life happens to take you down.



1 MAZDA5's advanced 2.5 L, DOHC engine with variable valve timing delivers both spirited performance and enviable fuel economy. 2 A slick-shifting 6-speed manual gearbox promotes quick and precise gear selection. While the optional 5-speed **Sport** mode automatic transmission combines the convenience of an automatic with the shift-for-yourself control and fun of a manual. 3 The available trip computer displays fuel economy at a glance - an invaluable tool for bragging rights over competitive vehicles - estimating how many kilometres before the tank is empty and detailing how far you've travelled.



EQUIPPED

FOR ALMOST ANYTHING.

In the MAZDA5, you'll always be prepared. Comfortably. An array of driver-centric features are all within easy reach. Like well-crafted front seats with thigh support and adjustable driver's seat lifter. Tilt and telescopic steering wheel with standard audio controls and available cruise control.* And automatic climate controls, AM/FM CD audio system with MP3 functionality, power windows, door locks and door mirrors, even a handy auxiliary audio input jack are all standard as well.

But it doesn't end there. The MAZDA5 features a standard 6-speed manual transmission. Or choose the optional 5-speed **Sport** mode automatic. Bluetooth® hands-free phone system with Audio Profile is available, as is a new trip computer to keep tabs on fuel economy.* Also available is a 6-disc in-dash CD changer (GT model). Power glass moonroof with tilt and slide (GT model with Luxury Package). And a leather-wrapped steering wheel.*

The GT model steps it up with an impressive list of standards, like heated front seats and door mirrors. Xenon High-Intensity Discharge (HID) headlights, anti-theft alarm system, SIRIUS Satellite Radio and fog lights - just to name a few.

Like we said, ready, willing and able.



1 Bluetooth® integration, standard on the MAZDA5 GT and available on the GS model*, enables you to easily make and receive calls, access voice mail messages and control audio content - all hands-free - using your Bluetooth®-enabled cell phone. 2 An auxiliary audio input jack, standard on every MAZDA5, lets you listen to the music on your MP3 player through the vehicle's audio system. 3 Mazda's remote keyless entry system and illuminated entry are also standard on every MAZDA5. They allow you to remotely unlock the driver's door, or all doors, while illuminating the interior. All at the touch of a button.

*Cruise control, Bluetooth®, trip computer and leather-wrapped steering wheel are standard on the GT model and available on the GS model with Convenience Package.



*BY THINKING OUTSIDE THE BOX,
WE AVOIDED CREATING ONE.*

Boxy, old-school minivans are so yesterday. Be the talk of the town in an all-new MAZDA5. Its insightful 2 x 3 seating arrangement brings added comfort for up to six people. Both centre-row reclining captain's chairs provide extra comfort and legroom. Armrests add further comfort. There's even a multi-function centre-row storage console with convenient fold-out table available on the GT model with Luxury Package. Standard rear air vents with fan-speed control for the second row. Plus handy dual cup holders for the third row. Even more versatility is delivered with second-row folding seats and a 50/50-split fold-down rear seatback. The MAZDA5 maximizes every centimetre of cabin space you need for your active lifestyle. Right out of the box.

*A MULTI-TASKING
THRILL-SEEKER.*

With its surprisingly spacious, easy-to-reconfigure interior, the all-new MAZDA5 is capable of juggling work, home and play, all with remarkable skill and efficiency. It serves up a generous 2,768 L of passenger space. And 426 L of cargo space with the third-row seats folded down. Its independently folding second-row and third-row seats create a virtually flat cargo floor that's over 850 L of space. Which makes the MAZDA5 capable of accommodating everything from six passengers to two mountain bikes. Do-it-yourself supplies to rock band gear. And sports bags to camping equipment. Its extra-wide, easy-sliding rear doors are designed to make loading and unloading incredibly convenient - as is its ultra-light rear lift-gate. Best of all, the MAZDA5 wraps it up in an unexpected-nothing-else-like-it design that delivers fun, versatility and value for life unexpected.



1 The second-row fold-out tray, centre-mounted for maximum convenience and utility, easily lifts and locks and features dual cup holders big enough for two travel mugs. A storage bin underneath is perfect for storing small items. And, when not needed, the tray can be stored under the seat cushion. 2 The hidden under-floor storage compartment lets you store items under the cargo area, safely hidden from sight and securely contained. An ample 426 L of cargo space is created simply by folding down the third row's 50/50-split fold-down seatback. No need to remove any headrests. And you'll still have plenty of room for four adults.





*THERE'S NO SUCH THING AS BEING
OVERPROTECTIVE.*

Mazda engineers equipped the all-new MAZDA5 with a comprehensive arsenal of standard safety features to help protect all occupants. Mazda's "Triple H" construction and steel side-impact door beams enhance structural integrity and impact protection. 4-wheel disc brakes and Anti-lock Brake System (ABS) with Electronic Brake Force Distribution (EBFD), Traction Control System (TCS) and Dynamic Stability Control (DSC)* help improve driver control. And advanced dual front air bags, dual front side-impact air bags and dual side air curtains† for all three rows are strategically positioned throughout the cabin. Three-point seat belts and adjustable headrests at all six seating positions are also standard. As is a "crushable" brake and accelerator pedal assembly designed to fold away on impact to help minimize the chance of a serious leg or ankle injury. An integrated Tire Pressure Monitoring System (TPMS) available on the GT warns you when air pressure in one or more tires is low. Making the all-new MAZDA5 a safe buy. In more ways than one.



1 "Triple H" Construction helps preserve the integrity of the passenger cabin in a collision through the engineering of sturdy H-shaped structural components engineered into the sides, roof, floor and firewall. In addition, side-impact beams in the doors increase driver and passenger protection. 2 Power-assisted 4-wheel disc brakes are standard on every MAZDA5 - as is an Anti-lock Brake System (ABS) with Electronic Brake Force Distribution and Brake Assist. Working together, they help provide the MAZDA5 with linear, fade-resistant stopping power. 3 Child-safety seat anchors are built into the second-row seats to help safely secure your most precious passengers. Both third-row seats are equipped with child safety-seat tether anchors.

*Dynamic Stability Control (DSC) is not a substitute for safe driving practices.
†Always wear your seat belt and secure children in the rear seats in appropriate child restraints.

2012 MAZDA5 SPECIFICATIONS

ENGINE	
Type	2.5 L DOHC 16-valve 4-cylinder
Displacement	2,489 cc
Compression ratio	9.7:1
Horsepower SAE net	157 @ 6,000 rpm
Torque SAE net lb. ft.	163 @ 4,000 rpm
Fuel system	Electronic Fuel Injection (EFI)
Recommended fuel	Regular
DRIVETRAIN	
Type	Transverse front engine/front-wheel drive
Transmission	6-speed manual Optional: 5-speed <i>Sport</i> mode automatic

CHASSIS	
Frame	Unit body (Monocoque) with side-door impact-protection beams and "Triple H" construction
Front suspension	Independent strut with coil springs and stabilizer bar
Rear suspension	Independent multi-link with coil springs and stabilizer bar
Steering	Rack-and-pinion with Electro-Hydraulic Power-Assist Steering
Minimum turning circle	11.2 m (curb-to-curb)
Brakes	Power-assisted 4-wheel disc brakes Anti-lock Brake System (ABS) with Electronic Brake Force Distribution (EBFD)
Curb weight (kg)	1,551 (MT); 1,569 (AT)

CAPACITIES	
Seating	6 persons
Fuel tank	60 L

EXTERNAL DIMENSIONS (MM)	
Wheelbase	2,750
Track (fr/fr)	1,529/1,519
Overall length	4,585
Overall width	1,750
Overall height	1,615
Ground clearance	140

INTERNAL DIMENSIONS	
Headroom - with moonroof (fr/2 nd /3 rd) (mm)	990/995/942
Headroom - without moonroof (fr/2 nd /3 rd) (mm)	1,034/1,000/942
Legroom (fr/2 nd /3 rd) (mm)	1,035/1,001/775
Shoulder room (fr/2 nd /3 rd) (mm)	1,409/1,410/1,251
Cargo volume (behind 3 rd seat) (L)	112
Cargo volume (with 3 rd seat folded) (L)	426
Cargo volume (with 2 nd /3 rd seats folded) (L)	857
Passenger volume (L)	2,768
Total interior volume (L)	4,024

FUEL ECONOMY RATINGS* (L/100 KM)		
	6MT	5AT <i>Sport</i>
City/Highway	9.7/6.8	9.5/6.7

*Estimated fuel economy. Your actual fuel consumption may vary.

2012 MAZDA5 FEATURES

ENGINEERING FEATURES	GS	GT
2.5 L DOHC 16-valve 4-cylinder engine	S	S
6-speed manual transmission	S	S
5-speed <i>Sport</i> mode automatic transmission	0	0
Power-assisted 4-wheel disc brakes	S	S
Anti-lock Brake System (ABS) with Electronic Brake Force Distribution (EBFD) and brake assist	S	S
Front and rear stabilizer bars	S	S
Dynamic Stability Control (DSC)	S	S
Traction Control System (TCS)	S	S

WHEELS AND TIRES	GS	GT
16" alloy wheels with 205/55R16 all-season tires	S	-
17" alloy wheels with 205/50R17 all-season tires	-	S
Temporary spare tire	S	S
Tire Pressure Monitoring System (TPMS)	-	S

EXTERIOR FEATURES		
Sporty bumpers	S	S
Side sill extensions	-	S
Front mud guards	S	-
Black front grille	S	-
Dark silver front grille	-	S
Body-coloured door handles	S	S
Body-coloured rear spoiler	-	S
Black power-operated door mirrors	S	-
Body-coloured power-operated heated door mirrors	-	S
Xenon (HID) headlights	-	S
Automatic headlight control	S	S
Rain-sensing intermittent windshield wipers	S	S
Rear window defroster and intermittent wiper	S	S
Fog lights	-	S
Dual rear sliding doors	S	S

AUDIO		
AM/FM CD player with 4 speakers	S	-
AM/FM 6-disc in-dash CD changer with 4 speakers and 2 tweeters	-	S
MP3 functionality on CD player/changer	S	S
Auxiliary audio input	S	S
Bluetooth® hands-free phone integration with Audio Profile	CP	S
Steering-wheel-mounted audio controls	S	S
SIRIUS Satellite Radio	-	S

COMFORT AND CONVENIENCE		
Micron air filter	S	S
Air conditioning with automatic climate controls and external temperature display	S	S
Rear air vents with fan-speed control	S	S
Rear heater ducts	S	S

2012 MAZDA5 FEATURES (cont'd)

COMFORT AND CONVENIENCE (cont'd)	GS	GT
Steering-wheel-mounted cruise controls	CP	S
Tilt and telescopic steering wheel	S	S
Internal fuel door release	S	S
Power door locks	S	S
Central locking switch on driver's and front passenger's door	S	S
Remote keyless entry system with retractable key, welcome mode and panic alarm	S	S
Illuminated entry	S	S
Driver's side foot rest	S	S
Day/night rearview mirror	S	S
Power windows with driver's one-touch down feature and switch illumination	S	S
Cargo area lamp	S	S
Map lamps	S	S
Driver's and passenger's sunvisors with covered vanity mirrors	S	S
Dual front cup holders	S	S
Dual third row cup holders	S	S
Passenger assist grips (3)	S	S
Coat hooks (2)	S	S
Power glass moonroof with tilt and slide	-	LP

SEAT AND TRIM		
Front-row seats:		
Reclining front seats with thigh support	S	S
Adjustable driver's seat lifter	S	S
Driver's seat lumbar support	-	S
Inner armrests	S	S
Second-row seats:		
Two captain's chairs with reclining and forward/backward sliding functions	S	S
Inner and outer armrests	S	S
Third-row seats:		
Two-passenger seating with 50/50-split fold-down seatbacks	S	S
Heated front seats	-	S
Sporty cloth upholstery	S	S
Leather-trimmed upholstery	-	LP
Leather-wrapped 3-spoke steering wheel	CP	S
Leather-wrapped shift knob	-	S
Silver finish on inner door handles (front row only)	S	S
Silver finish on instrument panel	S	S
Black and silver finish on shift panel	S	S
Custom-fitted floor mats	S	S

INSTRUMENT PANEL AND STORAGE		
Electroluminescent gauges	S	S
Black gauges with white lettering and white night-time illumination	S	S

2012 MAZDA5 FEATURES (cont'd)

INSTRUMENT PANEL AND STORAGE (cont'd)	GS	GT
Ignition key illumination	S	S
Tachometer	S	S
Trip computer	CP	S
Engine coolant temperature gauge	S	S
Warning lights for low fuel level, low windshield washer fluid, door ajar, check engine, oil pressure and air bags	S	S
Front door storage pockets with bottle holders	S	S
Centre row fold-out table/cargo bin	-	LP
Driver's side seatback pocket	S	S

SAFETY AND SECURITY		
Dual front air bags	S	S
Dual front side air bags	S	S
Dual side air curtains	S	S
Engine immobilizer theft-deterrent system	S	S
Side-door impact-protection beams	S	S
Child-proof door locks	S	S
Anti-theft alarm system	CP	S
Whiplash-reducing adjustable front-seat head restraints	S	S
Adjustable headrests on all seats	S	S
Height-adjustable front seat belts	S	S
Integrated child-seat anchors	S	S
3-point safety belts for all occupants	S	S
Driver's and front passenger's safety-belt pretensioners and load limiters	S	S

S = Standard 0 = Optional - = Not available CP = Convenience Package LP = Luxury Package

Convenience Package: Bluetooth® hands-free phone integration with Audio Profile, anti-theft alarm system, steering-wheel-mounted cruise controls, leather-wrapped 3-spoke steering wheel, and trip computer. (Available on GS.)

Luxury Package: Leather-trimmed upholstery, power glass moonroof with tilt and slide and centre row fold-out table/cargo bin. (Available on GT.)

® HomeLink and the HomeLink house are registered trademarks of Johnson Controls, Inc. Apple and iPod are registered trademarks of Apple Computer, Inc. © Bluetooth is a registered trademark of Bluetooth SIG, Inc.



2012 MAZDA5 WHEELS



16" alloy wheels (GS)



17" alloy wheels (GT)

2012 MAZDA5 COLOURS



Brilliant Black Mica

TRIM LEVEL	INTERIOR COLOUR	FABRICS
MAZDA5 GS & GT	Black	Cloth
MAZDA5 GT	Black	Leather



Metropolitan Grey Mica

TRIM LEVEL	INTERIOR COLOUR	FABRICS
MAZDA5 GS & GT	Black	Cloth
MAZDA5 GT	Black	Leather



Copper Red Mica

TRIM LEVEL	INTERIOR COLOUR	FABRICS
MAZDA5 GS & GT	Black	Cloth
MAZDA5 GT	Sand or Black	Leather



Aluminum Metallic

TRIM LEVEL	INTERIOR COLOUR	FABRICS
MAZDA5 GS & GT	Black	Cloth
MAZDA5 GT	Black	Leather



Crystal White Pearl

TRIM LEVEL	INTERIOR COLOUR	FABRICS
MAZDA5 GS & GT	Black	Cloth
MAZDA5 GT	Sand or Black	Leather



Stormy Blue Mica

TRIM LEVEL	INTERIOR COLOUR	FABRICS
MAZDA5 GS & GT	Black	Cloth
MAZDA5 GT	Black	Leather

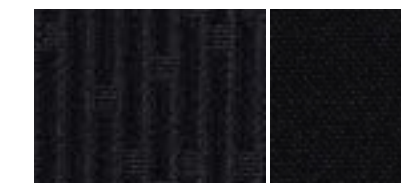


Clearwater Blue Mica

TRIM LEVEL	INTERIOR COLOUR	FABRICS
MAZDA5 GS & GT	Black	Cloth
MAZDA5 GT	Black	Leather

2012 MAZDA5 UPHOLSTERY

SEAT MAIN SEAT SIDE



Black Cloth



Black Leather with Red Piping



Sand Leather with Red Piping